

# SSO Using LDAP

Single Sign-On using Lightweight Directory Access Protocol



# Contents

Background and Prerequisite Steps



User Workflow



Student Learning & Licensure  
Admin Configuration



FAQ



# Background and Prerequisite Steps

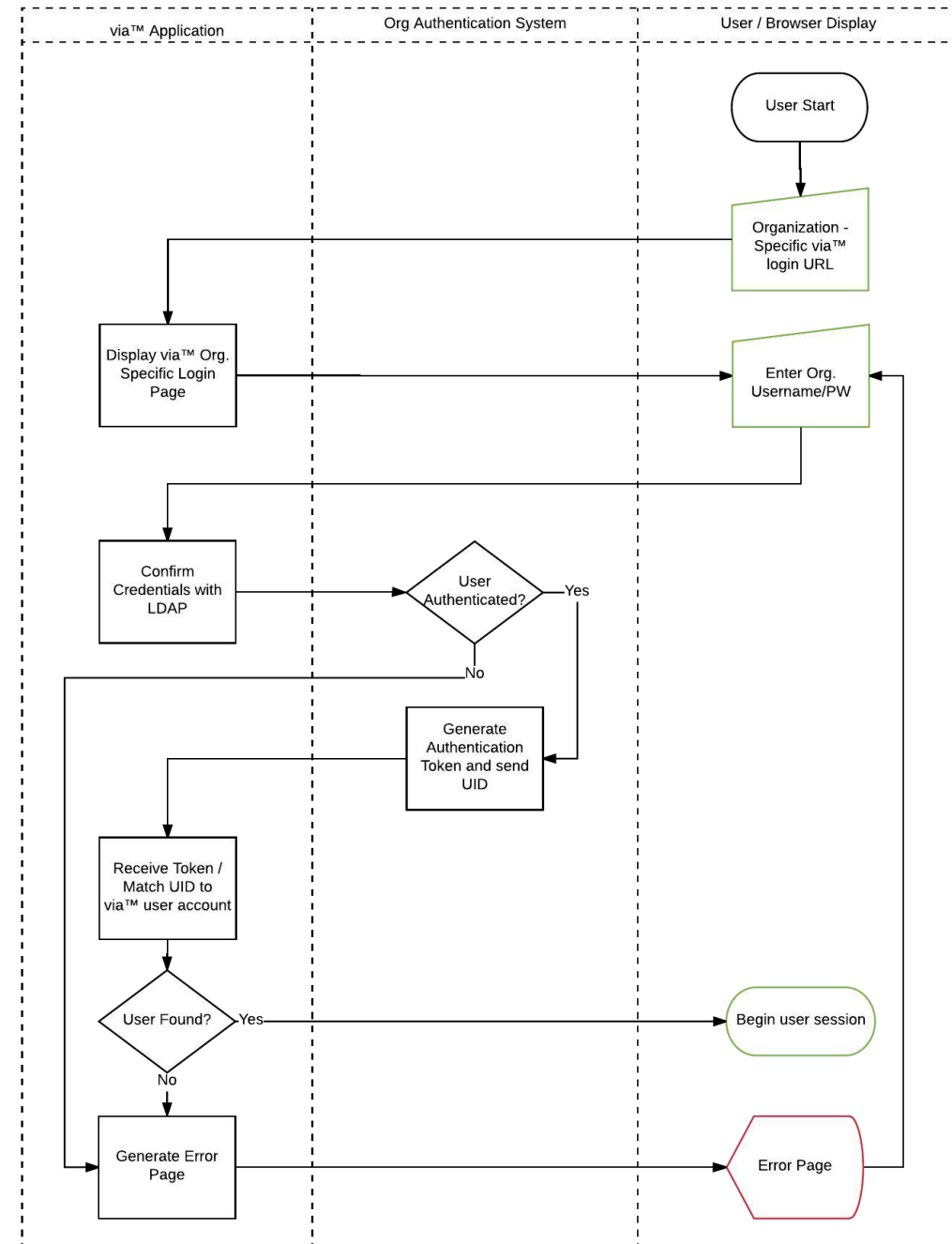
- ▶ Student Learning & Licensure uses LDAP to provide authentication based on the organization's directory information.
- ▶ Student Learning & Licensure does not use LDAP for creating, altering, deleting or searching for user information in the directory.
- ▶ All Student Learning & Licensure accounts must be created prior to user login and it is highly recommended that the SSO\_UID is supplied.
- ▶ The organization-specific URL can be referenced in the LMS, Portal, etc. and allow for seamless transition to Student Learning & Licensure.
- ▶ If the user is removed from the directory they are not removed from Student Learning & Licensure, Student Learning & Licensure credentials are then their only access.
- ▶ The application does not communicate with LDAP for Student Learning & Licensure account creation.

# User Workflow

- ▶ Click or visit login URL for Student Learning & Licensure for that Organization.
- ▶ Log in using Organization credentials.
- ▶ Access Student Learning & Licensure and arrive on “In Progress” page.

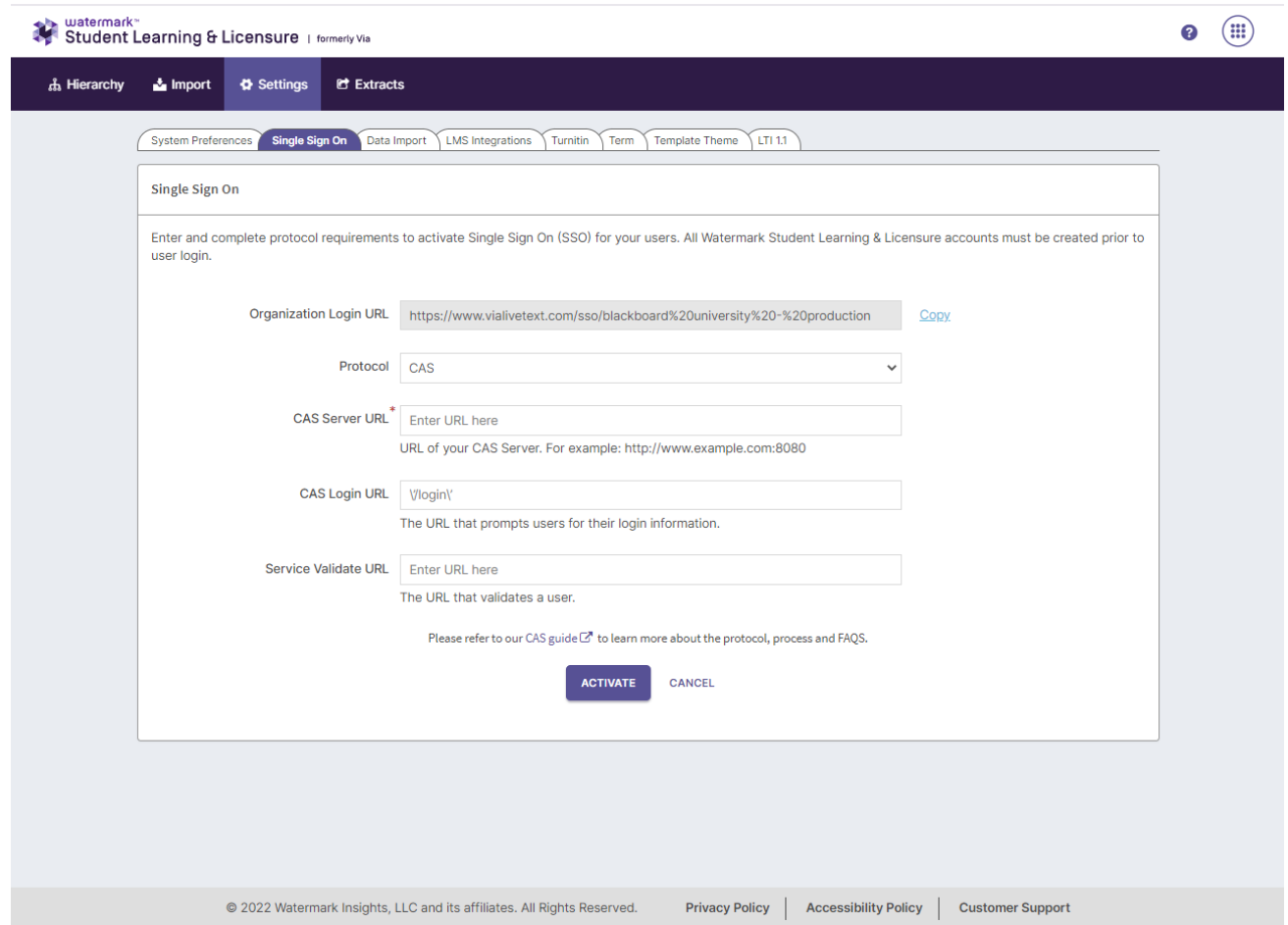
# Authentication and Communication Workflow

- ▶ Student Learning & Licensure presents an organization-specific login page and passes input to the organizations LDAP server
- ▶ Org. LDAP checks login status and if necessary, authenticates user.
- ▶ After login, LDAP calls back with HTTP Get request to Student Learning & Licensure including the token containing the UID.
- ▶ Student Learning & Licensure matches the UID to a known SL&L user or asks for user’s SL&L credentials if unknown.
- ▶ Upon successful match, user is logged in and shown the “In Progress” page in Student Learning & Licensure.



# Student Learning & Licensure Admin Configuration

- ▶ Within the Top Level Admin account for your Student Learning & Licensure Organization, click on Settings.
- ▶ Click the SSO Configuration tab.
- ▶ Click "Edit" in the upper right corner of the SSO Configuration box.
- ▶ Select LDAP as the strategy.
- ▶ Optionally, check the box to add the credentials needed to authenticate Student Learning & Licensure with the LDAP server.
- ▶ Optionally, if any customizations are needed to the Base Dn, enter those parameters.



The screenshot displays the 'Single Sign On' configuration page in the Watermark Student Learning & Licensure Admin interface. The page title is 'Single Sign On' and it includes a sub-header: 'Enter and complete protocol requirements to activate Single Sign On (SSO) for your users. All Watermark Student Learning & Licensure accounts must be created prior to user login.'

The configuration fields are as follows:

- Organization Login URL:**  [Copy](#)
- Protocol:**
- CAS Server URL:**   
URL of your CAS Server. For example: http://www.example.com:8080
- CAS Login URL:**   
The URL that prompts users for their login information.
- Service Validate URL:**   
The URL that validates a user.

At the bottom of the form, there is a note: 'Please refer to our CAS guide [to learn more about the protocol, process and FAQs.](#)' and two buttons: 'ACTIVATE' and 'CANCEL'.

The footer of the page contains: © 2022 Watermark Insights, LLC and its affiliates. All Rights Reserved. | [Privacy Policy](#) | [Accessibility Policy](#) | [Customer Support](#)

# Student Learning & Licensure Admin Configuration

- ▶ Optionally, if any customizations are needed for the Default Bind Dn, enter those.
- ▶ The top level of the LDAP structure is not accepted. Therefore the sub-directories path would need to be added. The format should look like this:  
OU=Students,DC=campus,DC=XXX,DC=XXX;  
OU=Staff,DC=campus,DC=XXX,DC=XXX; etc.
- ▶ Up to 5 sub-directories are accepted, all separated by a semicolon
- ▶ Optionally, if any customizations are needed for the user name attribute in the LDAP configuration, add that information.
- ▶ Note the Organization login URL that will be the address for the org's unique Student Learning & Licensure login page.

The screenshot shows the 'Single Sign On' configuration page in the Watermark Student Learning & Licensure Admin interface. The page title is 'Single Sign On' and it includes a sub-header: 'Enter and complete protocol requirements to activate Single Sign On (SSO) for your users. All Watermark Student Learning & Licensure accounts must be created prior to user login.'

The configuration fields are:

- Organization Login URL:**  [Copy](#)
- Protocol:**
- CAS Server URL:**   
URL of your CAS Server. For example: http://www.example.com:8080
- CAS Login URL:**   
The URL that prompts users for their login information.
- Service Validate URL:**   
The URL that validates a user.

At the bottom, there is a link: 'Please refer to our [CAS guide](#) to learn more about the protocol, process and FAQs.'

Buttons: **ACTIVATE** (highlighted) and **CANCEL**.

Footer: © 2022 Watermark Insights, LLC and its affiliates. All Rights Reserved. | [Privacy Policy](#) | [Accessibility Policy](#) | [Customer Support](#)

# F.A.Q.

## When will users be prompted to log in vs being redirected?

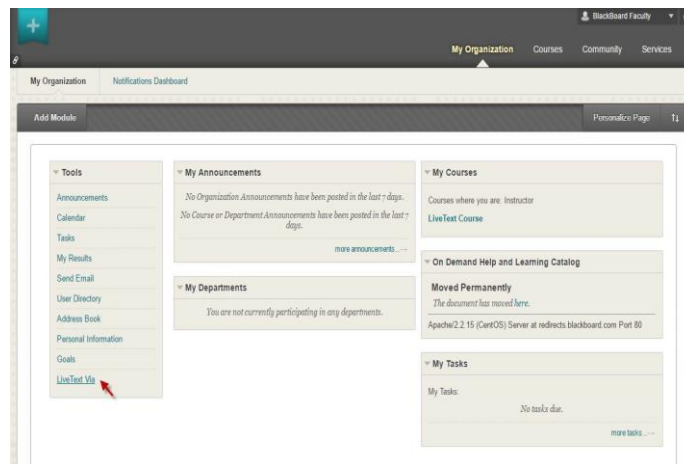
- ▶ Student Learning & Licensure will use the LDAP connection to authenticate for every new session. If a user is logged in to another organization application authenticated through LDAP that will not affect the login status for Student Learning & Licensure. They will not be redirected without logging in again.

## Can the URL be customized or shortened?

- ▶ No, but the URL isn't intended to be typed by users. Rather, it can be referenced as a link in the portal, LMS or part of an organization - hosted redirect page for convenience. For example, a page at "www.ltsu.edu/via" can be set up to redirect to that page, or a Blackboard tool can be set up using that URL with the link text chosen by the Blackboard admin.

## Why are users receiving a "wrong username or password" error?

- ▶ If the organization has not created a user account with a SSO\_UID matching the ID which the LDAP process included in the token, the user will receive the error that the username or password is wrong. This is because their account cannot be found in Student Learning & Licensure™. This can be avoided by creating a user account with, or updating the profile to include, the correct SSO\_UID in the user import.



### HTML

```
<meta http-equiv="refresh"
content="0";
URL=https://www.vialivetext.com/ss
o/ltsu!"/>
```

### JavaScript

```
window.location =
"https://www.vialivetext.com/s
o/ltsu";
```