

# SSO Using CAS

Single Sign-On using Central Authentication Service Protocol



# Contents

Background and Prerequisite Steps



User Workflow



Student Learning & Licensure  
Admin Configuration



FAQ



# Background and Prerequisite Steps

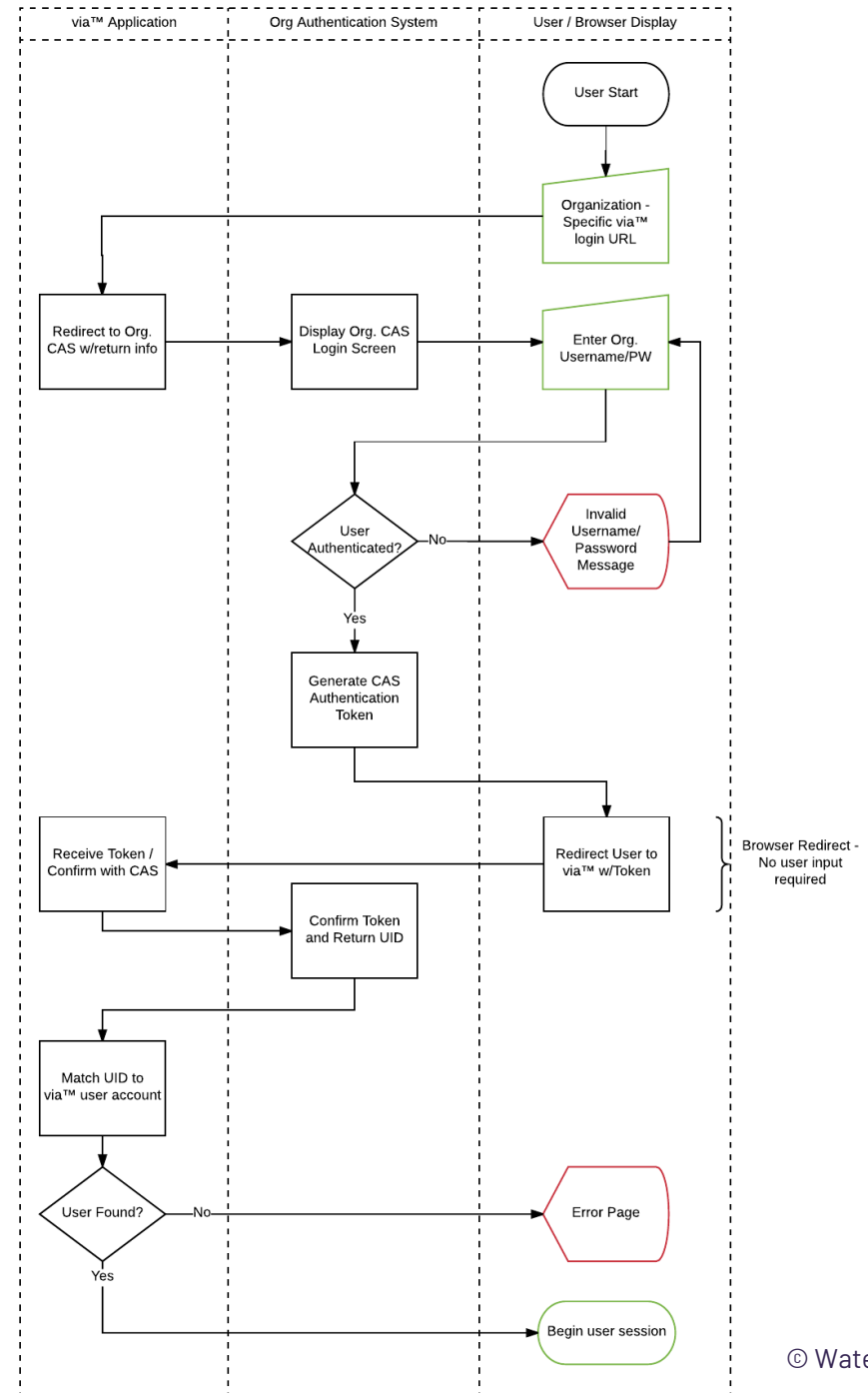
- ▶ All Student Learning & Licensure accounts must be created prior to user login and it is highly recommended that the SSO\_UID is supplied.
- ▶ The university-specific URL can be referenced in the LMS, Portal, etc. and allow for seamless transition to Student Learning & Licensure
- ▶ This is in addition to any LTI / Grade return set up in the LMS
- ▶ If the user is removed from CAS, Student Learning & Licensure authentication is the only access. They are not removed from Student Learning & Licensure .
- ▶ CAS does not create Student Learning & Licensure accounts.

# User Workflow

- ▶ Click or visit redirect page for Student Learning & Licensure.
- ▶ If necessary, log in using University credentials.
- ▶ Access Student Learning & Licensure and arrive on "In Progress" page.

# Authentication and Communication Workflow

- ▶ Student Learning & Licensure requests login page from University CAS and includes callback information.
- ▶ University CAS checks login status and if necessary, authenticates user.
- ▶ After login, CAS calls back with HTTP. Get request to Student Learning & Licensure including the token containing the User's ID.
- ▶ Student Learning & Licensure matches the UID to a known Student Learning & Licensure user, or asks for user's Student Learning & Licensure credentials if unknown,
- ▶ Upon successful match, user is logged in and shown the "In Progress" page in Student Learning & Licensure .



# Student Learning & Licensure Admin Configuration

- ▶ Within the Top Level Admin account for your Student Learning & Licensure Organization, click on **Settings**.
- ▶ Click the **SSO Configuration tab**.
- ▶ Click **Edit** in the upper right corner of the SSO Configuration box.
- ▶ Select **CAS** as the strategy
- ▶ Enter in your **CAS URL**.
- ▶ Enter in the **CAS login URL (ex: /login)**.
- ▶ Enter in the **service validate URL (ex: /serviceValidate)**.
- ▶ Click **Save**.

The screenshot displays the 'Single Sign On' configuration page in the Watermark Student Learning & Licensure Admin interface. The page title is 'Single Sign On' and it includes a sub-header: 'Enter and complete protocol requirements to activate Single Sign On (SSO) for your users. All Watermark Student Learning & Licensure accounts must be created prior to user login.'

The configuration fields are as follows:

- Organization Login URL:**  [Copy](#)
- Protocol:**
- CAS Server URL:**   
URL of your CAS Server. For example: http://www.example.com:8080
- CAS Login URL:**   
The URL that prompts users for their login information.
- Service Validate URL:**   
The URL that validates a user.

At the bottom of the form, there is a link: 'Please refer to our [CAS guide](#) to learn more about the protocol, process and FAQs.'

At the bottom of the page, there are two buttons: **ACTIVATE** and **CANCEL**.

The footer of the page contains: © 2022 Watermark Insights, LLC and its affiliates. All Rights Reserved. | [Privacy Policy](#) | [Accessibility Policy](#) | [Customer Support](#)

# F.A.Q.

## Can the URL be customized or shortened?

- ▶ No, but the URL isn't intended to be typed by users. Rather, it can be referenced as a link in the portal, LMS or part of a university-hosted redirect page for convenience. For example, a page at "www.ltsu.edu/via" can be set up to redirect to that page, or a Blackboard tool can be set up using that URL with the link text chosen by the Blackboard admin.

## When will users be prompted to log in vs being redirected?

- ▶ Student Learning & Licensure does not handle any login or session expiration, so users will be subject to the university CAS login policy.

## Why are users seeing a Student Learning & Licensure login page?

- ▶ If the university has not created a user account with a SSO\_UID matching the ID which the CAS process included in the token, the user is asked to pair the account manually. This is done by supplying a Student Learning & Licensure username and password. This can be avoided by creating a user account, or updating the profile to include the correct SSO\_UID in the user import.