

SSO Using CAS

Single Sign-On using Central Authentication Service
Protocol



Contents

Background and Prerequisite Steps



User Workflow



Student Learning & Licensure
Admin Configuration



FAQ



Background and Prerequisite Steps

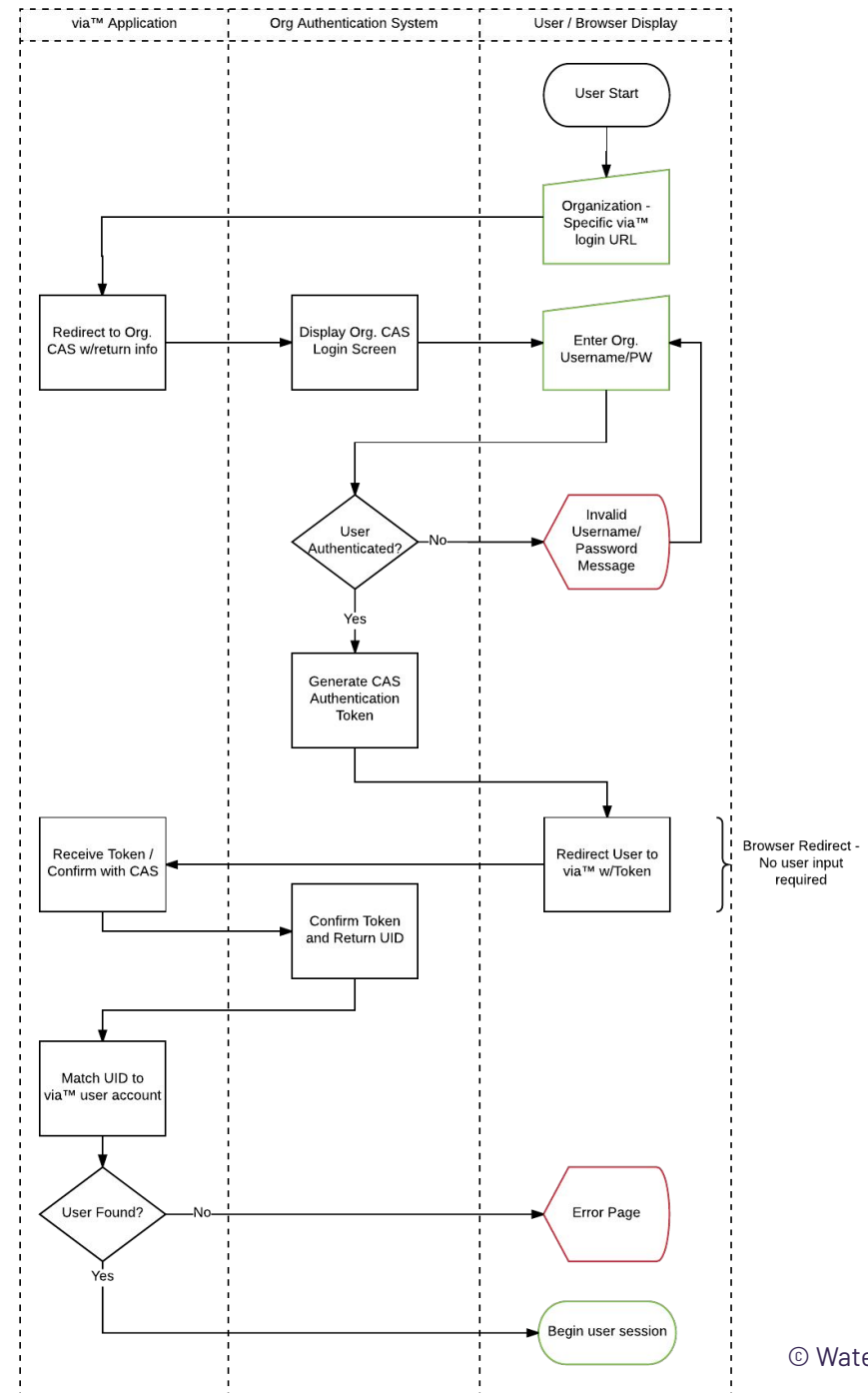
- ▶ All Student Learning & Licensure accounts must be created prior to user login and it is highly recommended that the SSO_UID is supplied.
- ▶ The university-specific URL can be referenced in the LMS, Portal, etc. and allow for seamless transition to Student Learning & Licensure
- ▶ This is in addition to any LTI / Grade return set up in the LMS
- ▶ If the user is removed from CAS, Student Learning & Licensure authentication is the only access. They are not removed from Student Learning & Licensure .
- ▶ CAS does not create Student Learning & Licensure accounts.

User Workflow

- ▶ Click or visit redirect page for Student Learning & Licensure.
- ▶ If necessary, log in using University credentials.
- ▶ Access Student Learning & Licensure and arrive on "Progress" page.

Authentication and Communication Workflow

- ▶ Student Learning & Licensure requests login page from University CAS and includes callback information.
- ▶ University CAS checks login status and if necessary, authenticates user.
- ▶ After login, CAS calls back with HTTP. Get request to Student Learning & Licensure including the token containing the User's ID.
- ▶ Student Learning & Licensure matches the UID to a known Student Learning & Licensure user, or asks for user's Student Learning & Licensure credentials if unknown,
- ▶ Upon successful match, user is logged in and shown the "Progress" page in Student Learning & Licensure .



Student Learning & Licensure Admin Configuration

- ▶ Within the top level admin account for your Student Learning & Licensure organization, click **Settings > Configuration Settings > Single Sign On**
- ▶ Click **Edit** in the upper right corner of the Single Sign On box.
- ▶ Select **CAS** as the Protocol
- ▶ Enter in your **CAS Server URL**.
- ▶ Enter in the **CAS Login URL (ex: /login)**.
- ▶ Enter in the **Service Validate URL (ex: /serviceValidate)**.
- ▶ Click **Save**.

 In Progress

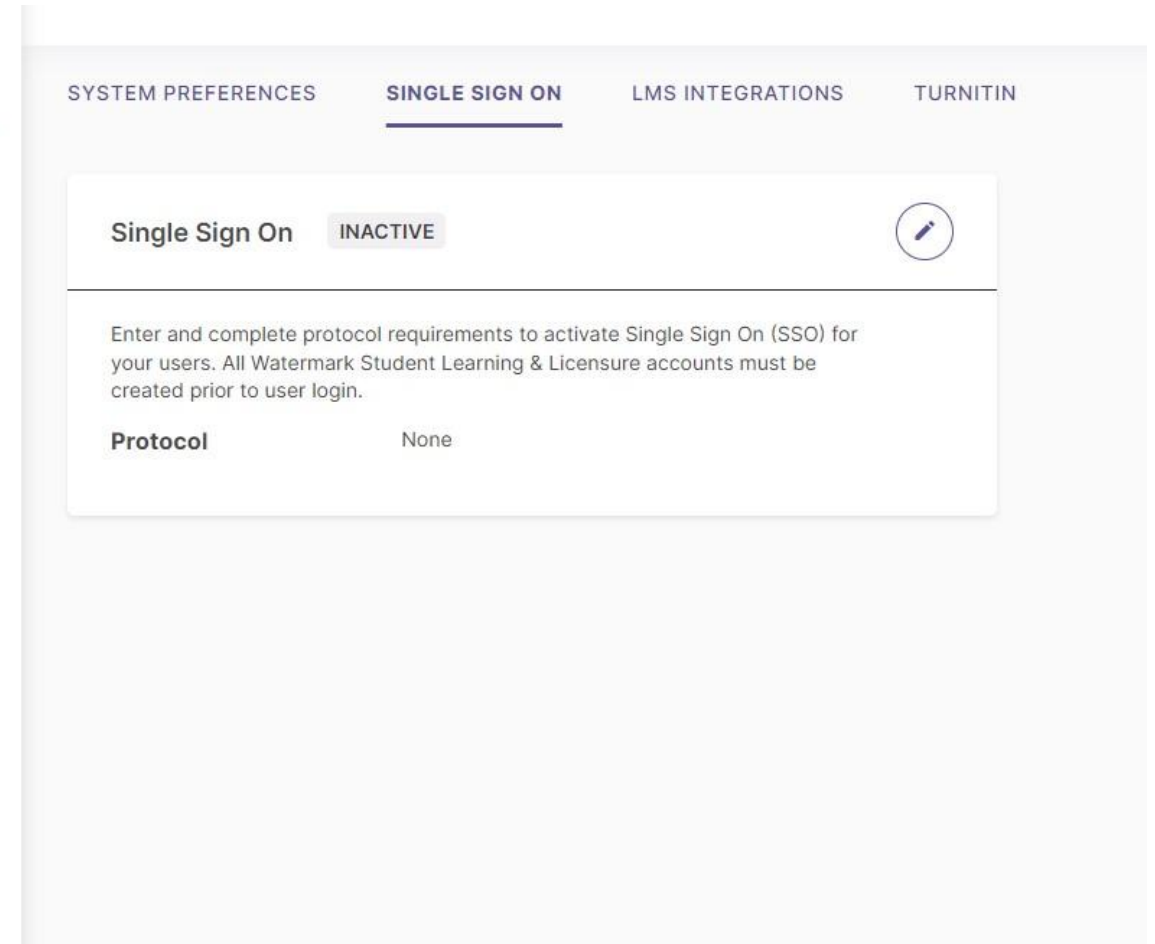
 Timeline

 ePortfolios

 Templates

 Rubrics

 Reports



The screenshot shows the 'SINGLE SIGN ON' configuration page. At the top, there are tabs for 'SYSTEM PREFERENCES', 'SINGLE SIGN ON', 'LMS INTEGRATIONS', and 'TURNITIN'. The 'SINGLE SIGN ON' tab is active. Below the tabs, there is a 'Single Sign On' section with a status of 'INACTIVE' and an edit icon. A text box below explains that users must complete protocol requirements to activate SSO. A table below shows the current 'Protocol' is 'None'.

Protocol	None
Protocol	None

F.A.Q.

Can the URL be customized or shortened?

- ▶ No, but the URL isn't intended to be typed by users. Rather, it can be referenced as a link in the portal, LMS or part of a university-hosted redirect page for convenience. For example, a page at "www.ltsu.edu/via" can be set up to redirect to that page, or a Blackboard tool can be set up using that URL with the link text chosen by the Blackboard admin.

When will users be prompted to log in vs being redirected?

- ▶ Student Learning & Licensure does not handle any login or session expiration, so users will be subject to the university CAS login policy.

Why are users seeing a Student Learning & Licensure login page?

- ▶ If the university has not created a user account with a SSO_UID matching the ID which the CAS process included in the token, the user is asked to pair the account manually. This is done by supplying a Student Learning & Licensure username and password. This can be avoided by creating a user account, or updating the profile to include the correct SSO_UID in the user import.